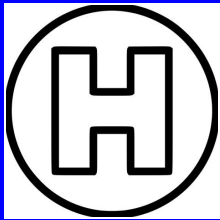


MERCY LIFE LINE SET UP A SAFE Landing Zone



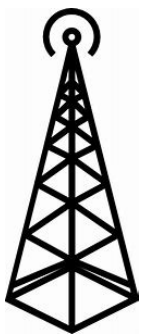
SET UP A LANDING ZONE

- * Ensure the LZ is at least 100' x 100' in diameter
- * Ensure the LZ is on level ground
- * LZ surface can be secured roadway, grassy field, parking lot, etc.



HOW IS LZ MARKED?

- * Mark LZ corners with crossed headlights (Dim upon landing)
- * LED lights & beacons are suitable for nighttime LZ's
- * Mark overhead wires with vehicles or apparatus lighting



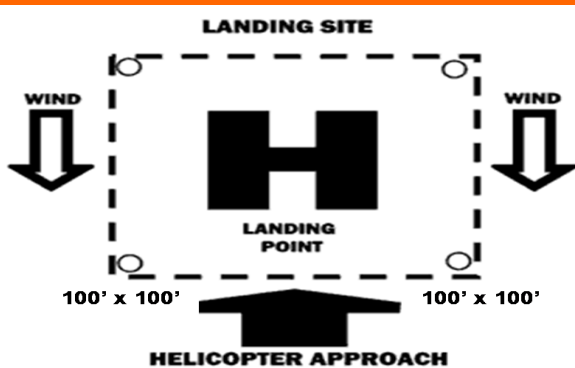
IDENTIFY OBSTRUCTIONS

- *NEAR THE LZ: Identify trees, signs and light poles on perimeter and ALL wires and their direction
- *NEARBY LZ: Identify buildings, poles ALL wires and their direction
- *FAR FROM LZ: Identify water towers, radio/cell towers and high tension lines
- *Obstructions should be identified by their direction from the LZ (north, east, southwest, etc)



SAFETY FIRST

- * Ensure two-way radio communication for LZ briefing
- * LZ command ensures first responders & onlookers remain at a clear distance during landing & takeoff
- * Secure loose items that can be effected by rotor wash
- * Do NOT approach aircraft until directed by crew
- * Bright white lights are not NVG friendly



Contact us for a FREE Landing Zone Class
(417) 820-5379

Dispatch
1-800-433-5433